

Kawai ASIO Driver Installation Guide

This document explains how to install the ASIO driver required to use the USB audio interface of a Kawai digital or hybrid piano when connected to a Windows computer.

Please disconnect the digital/hybrid piano from the computer before attempting to install/uninstall this driver.

Please close all running applications before starting the installation. Do not use or launch any other applications during the installation process.

■ ASIO driver requirements

This driver requires a computer running Windows 10 or Windows 11 (64-bit, x64 architecture), and a Kawai digital/hybrid piano featuring a USB audio interface running **firmware v1.8 or later**. Please visit the Kawai Global website to download the latest USB audio interface firmware update and version check tool: <https://www.kawai-global.com/support/downloads/>.

■ Installing the ASIO driver

1. On the computer, launch [**kawaisetup.exe**] located in the same folder as this manual.

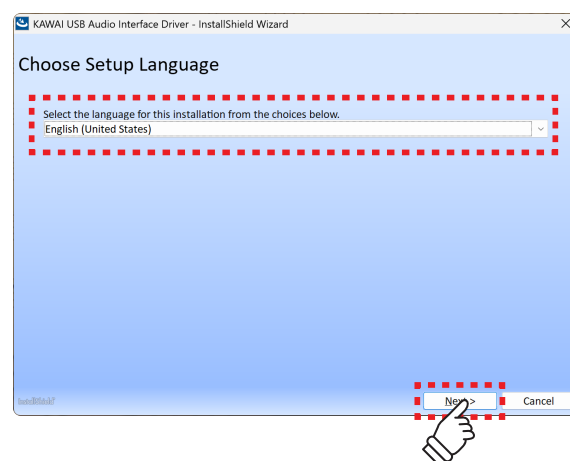
If a pop-up appears requesting “Do you want to allow this app to make changes to the device?”, click [**Yes**].

After a few seconds, the installer tool will appear.



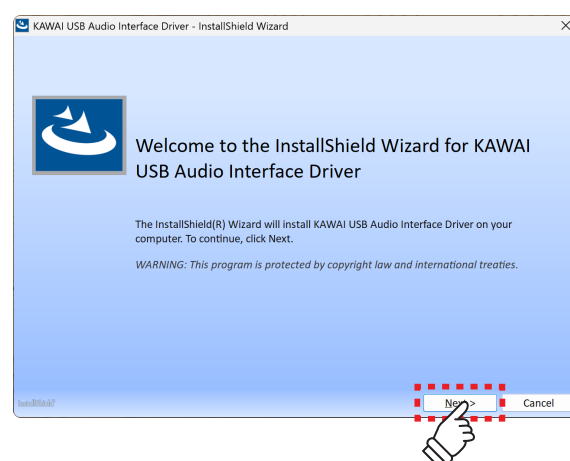
2. Select the desired language, then click the [**Next**] button.

The Welcome screen will be displayed.



3. Click the [**Next**] button once again.

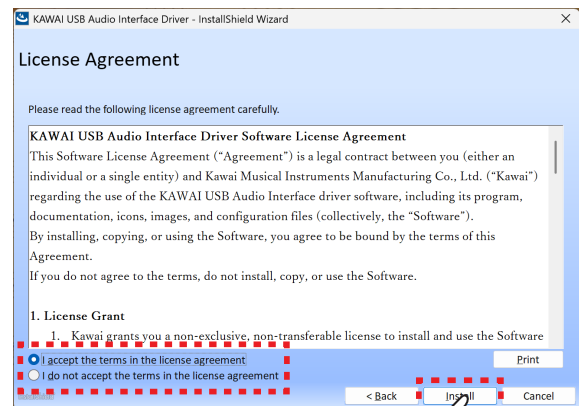
The License Agreement screen will be displayed.



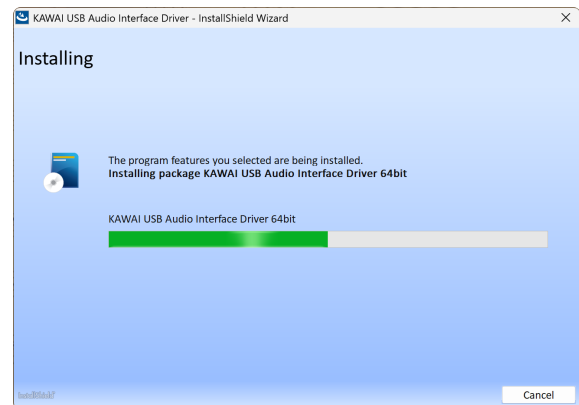
Kawai ASIO Driver Installation Guide

■ Installing the ASIO driver (continued)

4. After carefully reviewing the contents, if you agree, select **[I accept the terms in the license agreement]** then click **[Install]**.

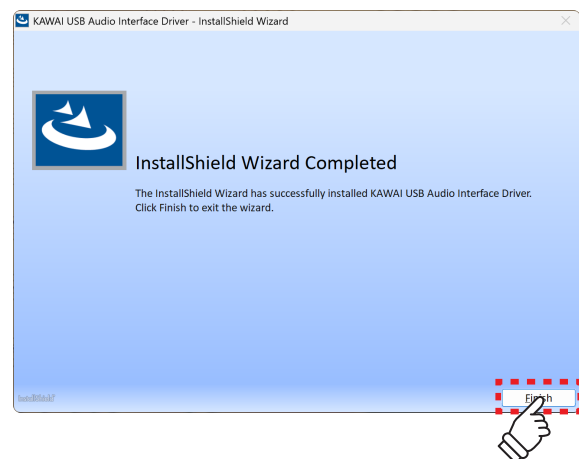


5. The ASIO driver installation will begin.



6. After a short wait, the ASIO driver installation will be completed.

Click the **[Finish]** button to close the installer tool.



Kawai ASIO Driver Installation Guide

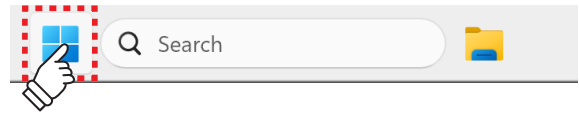
■ Uninstalling the ASIO driver

Please follow the steps below to uninstall the ASIO driver.

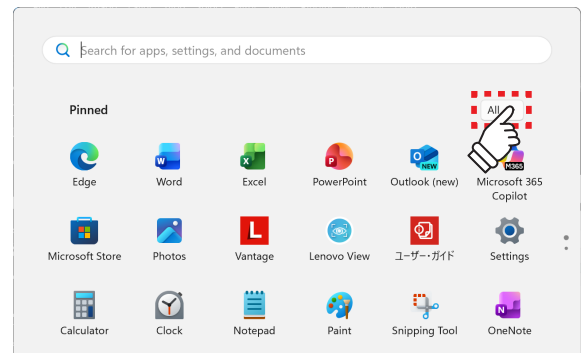
Please disconnect the digital/hybrid piano from the computer before attempting to uninstall this driver.

1. Click the Start button.

The Start Menu will be displayed.



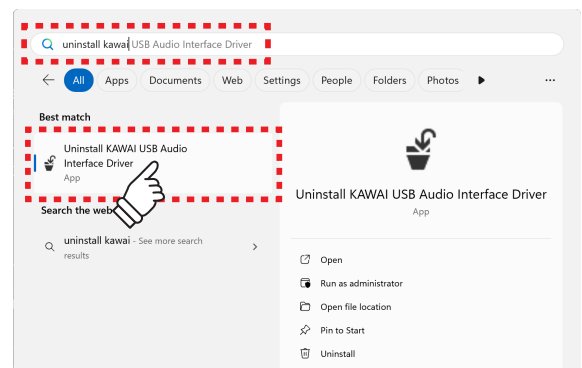
2. Click the [All] button.



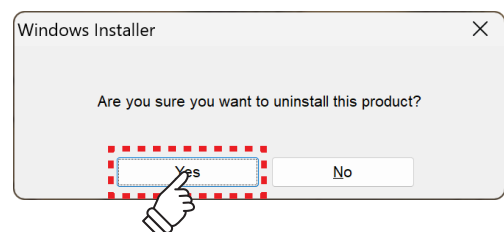
3. Enter [uninstall kawai] into the Search box.

Click the [Uninstall KAWAI USB Audio Interface Driver] icon that appears.

The uninstall confirmation prompt will be displayed.

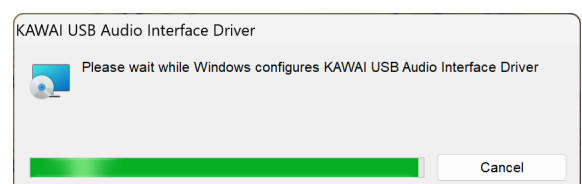


4. Click the [Yes] button to proceed with uninstalling the ASIO driver.



5. The ASIO driver uninstall process will begin.

Continue to follow the onscreen prompts until the uninstall process is completed.



Kawai ASIO Driver Installation Guide

■ Kawai ASIO Driver Changelog

V1.0.1 (November 2025)

- First production version.