

Software Update (CX202)

This document contains instructions for updating the system software of the Kawai CX202 digital piano. Please read these instructions thoroughly before attempting to perform the software update.

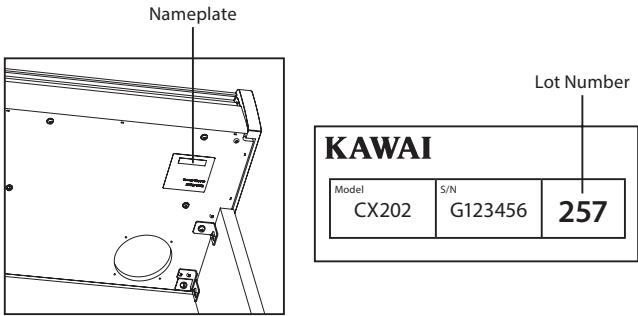
The update process will require approximately 7 minutes to complete.

Determining whether an update is necessary

To determine whether it is necessary to update the software, please refer to the nameplate located on the underside of the instrument, towards the treble end, as show in the illustration.

If the lot number in the top right corner of the nameplate matches **256**, **257**, **258**, or **259**, it is recommended to update the software. Please continue to follow the instructions below.

If the lot number **does not match** one of the above numbers, the instrument's software is already up to date, therefore no further action is necessary.



Update requirements

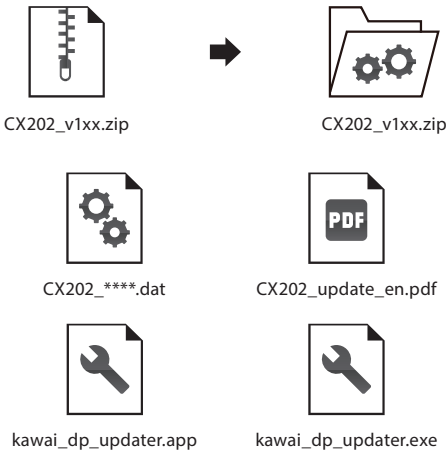
This stage of the software update will require a Windows or macOS computer with internet access, and a USB type "B" to type "A" cable.

Preparing for the update

After downloading the software update zip file, extract the contents to a temporary folder (e.g. the Desktop).

The folder should contain four files.

Filename	Description
CX202_****.dat	CX202 system software
CX202_update_en.pdf	Update instructions
kawai_dp_updater.app	Update tool for macOS
kawai_dp_updater.exe	Update tool for Windows

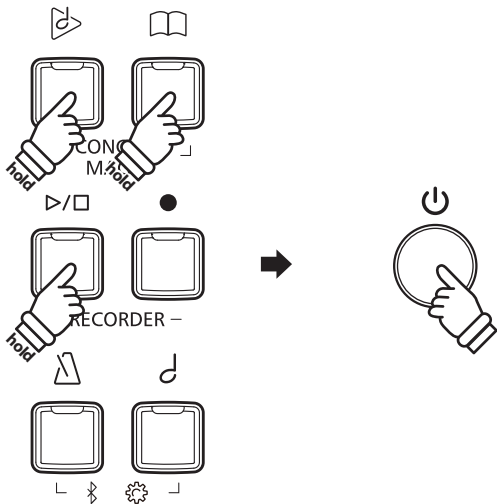


1. Turn on the piano in update mode

While the CX202 digital piano is turned off:

Press and hold the [], [], and [] buttons simultaneously, then press the [] (POWER) button to turn the instrument on.

The piano will turn on in update mode, and the LED indicators for the three pressed buttons will start to flash.



Software Update (CX202)

2. Connect the piano to the computer

Connect the piano to the computer using a USB type "B" to USB type "A" cable.



3. Launch the Kawai DP Updater tool

Launch the Kawai DP Updater tool on the Windows or macOS computer.



4. Select the update file and MIDI Out device

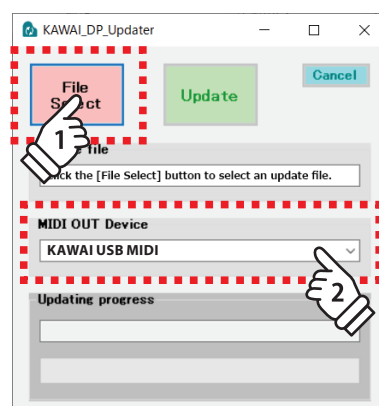
From the Kawai DP Updater tool window:

Click the [File Select] button, then select the **CX202_****.dat** update file.

* The file should be stored in the temporary folder on the desktop.

Click the MIDI Out Device list and select [KAWAI USB MIDI].

* Note that the position of the USB-MIDI device within the list may vary if other MIDI devices are also connected to the computer.



5. Start the update process

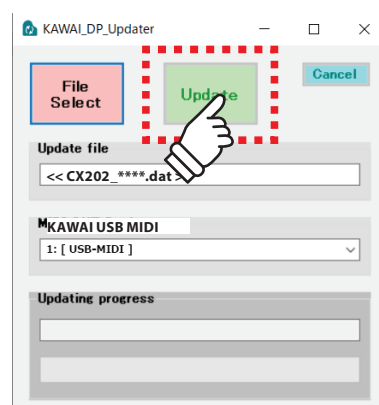
From the Kawai DP Updater tool window:

Click the [Update] button to start the software update process.

* The software update will take approximately 7 minutes to complete. The update progress will be shown in the bottom of the window.

* During the update, do not use or attempt to launch other applications, and ensure that the Kawai DP Updater tool remains the front-most window.

* During the update, the LED indicators for different buttons will continue to flash, however do not turn off the piano.



6. Finish the update

After approximately 7 minutes, the LED indicators for the [Δ] and [♪] buttons will start to flash, and an [Update complete!] message will be shown in the Kawai DP Updater tool window.

Disconnect the USB cable, then press and hold the [⏻] (POWER) button for 2 seconds to turn the instrument off.

When the instrument is turned on, the updated software will be used automatically.

* If this stage of the update is unsuccessful, please restart from step 1.



Software Update (CX202)

■ CX202 System software changelog

V1.03 (November 2025)

- Adjusted speaker EQ.

V1.02 (September 2025)

- Adjusted speaker EQ.

V1.01 September 2025)

- Fixed an issue that prevented the PianoRemote app from connecting via USB cable.
- Changed: Enabled the effect for the “Reed Electric Piano” sound.

V1.00 (April 2025)

- First production version.