

# Software Update (CA99/CA79 LCD touch panel)

This document contains instructions for updating the software of the CA99/CA79 digital piano LCD touch panel. Please read these instructions thoroughly before attempting to perform the software update.

The update procedure will require approximately five minutes to complete.

## ■ Update requirements

The software update will require a computer with internet access and an empty USB memory device.

\* The USB memory device must use the 'FAT' or 'FAT32' filesystem. The 'exFAT' filesystem is not supported.

## ■ Checking the current software versions

While the CA99/CA79 digital piano is turned on:

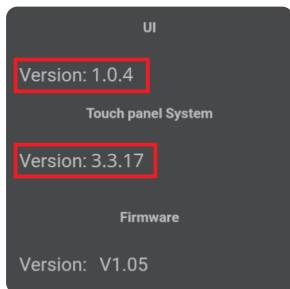
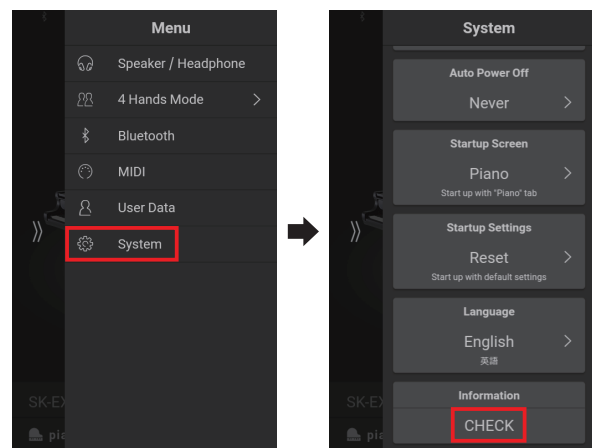
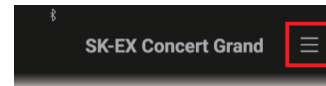
Tap the ☰ button in the top right corner of the screen to open the Menu.

Tap [SYSTEM], then scroll to the bottom of the menu and tap [Information: CHECK] to show the Version/License screen.

If the UI version number is greater than or equal to the update zip file filename, no further action is necessary.

\* Exit the menu to return to normal operation.

If the UI version number is lower than the update version, please follow the update instructions on the following page.

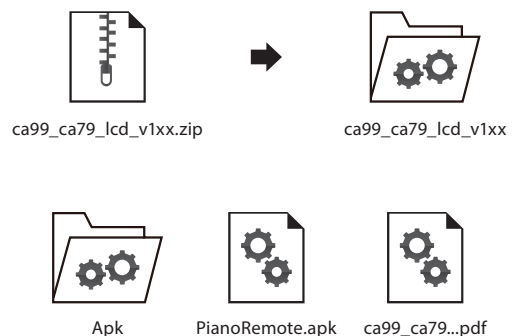


## ■ Preparing for the update

After downloading the LCD touch panel software update zip file, extract the contents to a temporary folder (e.g. the Desktop).

The folder should contain two files and one folder.

Filename	Description
Apk [folder]	Folder
PianoRemote.apk	LCD touch panel software
ca99_ca79_lcd_en.pdf	Update instructions



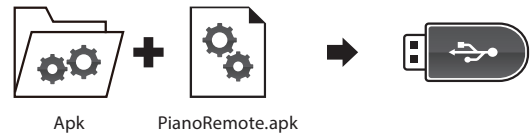
# Software Update (CA99/CA79 LCD touch panel)

## 1. Copy the update files to the USB memory device

Copy the **Apk** folder and **PianoRemote.apk** file from the temporary folder to the root (i.e. top-most) folder of the empty USB memory device.

\* Do not attempt to modify the update files.

\* Do not copy any other data to the USB memory device at this time.



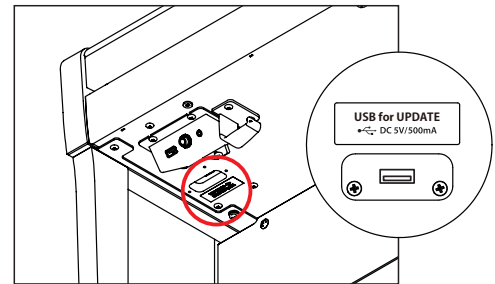
## 2. Connect the USB memory device

While the CA99/CA79 digital piano is turned off:

Connect the prepared USB memory device to the **[USB for UPDATE]** port located on the left side of the instrument, underneath the keyboard, and behind the headphone connector block.

\* Be careful not to confuse this port with the **[USB to DEVICE]** port located beside the headphone connectors.

Press the **[POWER]** button to turn on the digital piano.



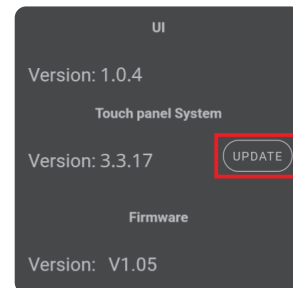
## 3. Start the update

Enter the Version/License screen, as explained on page 1 of this PDF. An **[UPDATE]** button should be shown beside the Touch panel System version number.

Tap the **[UPDATE]** button to start the update.

\* Do not disconnect the USB memory device or turn off the instrument while the update is in progress.

\* If the **[UPDATE]** button does not appear, please restart this procedure from step 1.



## 4. Finish the update, disconnect the USB memory device

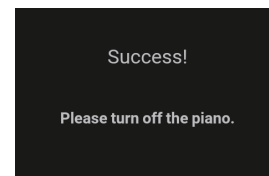
After approximately one minute a "Success!" message should appear, indicating that the update has been successful.

Disconnect the USB memory device, then press and hold the **[POWER]** button to turn the instrument off.

When the instrument is turned on, the updated touchpanel software will be installed and used automatically.

\* During the update installation process, the display will remain black for approximately three minutes. Please wait for the process to finish.

\* If the update is unsuccessful, please restart this procedure from step 1.



# Software Update (CA99/CA79 LCD touch panel)

## ■ CA99/CA79 LCD touch panel system changelog

---

### V3.4.0-6 (October 2021)

- Added: Support for adjusting 'User' Virtual Technician parameters. (Touch Curve/Voicing/Tuning/Temperament/Key Volume)

Note: This functionality also requires system software update v2.08 (or newer) to be installed.

\* For more information about the added 'User' Virtual Technician parameters, please refer to the URL below:  
[https://www2.kawai.co.jp/emi-web/pianoremove-docs\\_update/en/](https://www2.kawai.co.jp/emi-web/pianoremove-docs_update/en/)

### V3.3.21 (April 2020)

- Improved: UI update system.

### V3.3.20 (March 2020)

- Improved: Update system.

### V3.3.17 (February 2020)

- Added: A-B Repeat function added.
- Fixed: Various bugs.

### V3.3.8 (December 2019)

- Fixed: Various bugs.

### V3.3.6 (December 2019)

- First production version.

## ■ CA99/CA79 LCD touch panel UI changelog

---

### V1.2.0 (October 2021)

- Added: Support for adjusting 'User' Virtual Technician parameters.
- Fixed: Bug related to stored sounds not being recalled correctly at startup.
- Improved: Language setting can now be stored and recalled at startup.

### V1.0.6 (April 2020)

- Added: Various improvements and fixes related to the PianoRemote app.

### V1.0.4 (February 2020)

- Added: Overdubbing (Recorder) function.
- Added: User Tone Control setting.
- Added: Bluetooth MIDI display name setting.
- Fixed: Various bugs.

### V1.0.3 (December 2019)

- Fixed: Various bugs.

### V1.0.2 (December 2019)

- First production version.