

# Software Update (CA/NV LCD touch panel)

This document contains instructions for updating the LCD touch panel software of CA and NV series digital and hybrid pianos. Please read these instructions thoroughly before attempting to perform the software update.

\* Supported models: CA901/CA701, CA99/CA79, NV10S/NV5S

The update procedure will require approximately 15 minutes to complete.

## ■ Update requirements

The software update will require a computer with internet access and an empty USB memory device.

\* The USB memory device must use the 'FAT' or 'FAT32' filesystem. The 'exFAT' filesystem is not supported.

## ■ Checking the current software versions

While the CA/NV digital/hybrid piano is turned on:

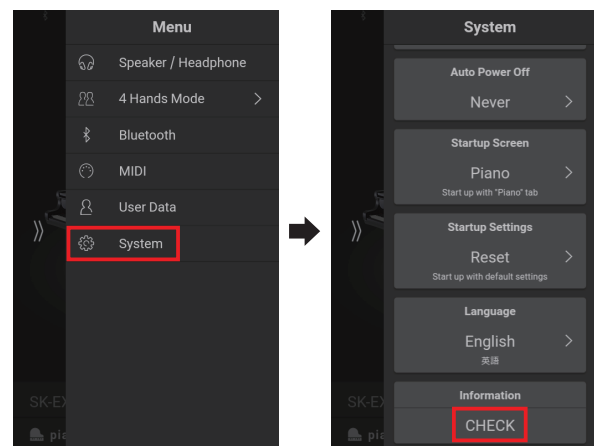
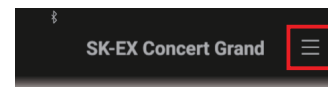
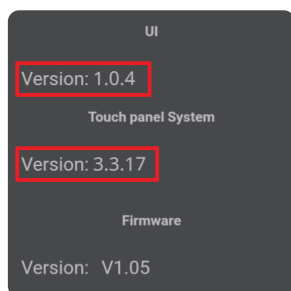
Tap the ☰ button in the top right corner of the screen to open the Menu.

Tap [SYSTEM], then scroll to the bottom of the menu and tap [Information: CHECK] to show the Version/License screen.

If the UI version number is greater than or equal to the update zip file filename, no further action is necessary.

\* Exit the menu to return to normal operation.

If the UI version number is lower than the update version, please follow the update instructions on the following page.

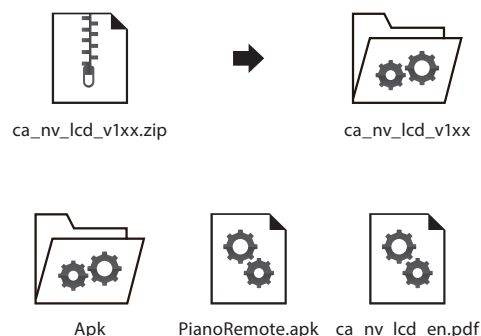


## ■ Preparing for the update

After downloading the LCD touch panel software update zip file, extract the contents to a temporary folder (e.g. the Desktop).

The folder should contain two files and one folder.

Filename	Description
Apk [folder]	Folder
PianoRemote.apk	LCD touch panel software
ca_nv_lcd_en.pdf	Update instructions



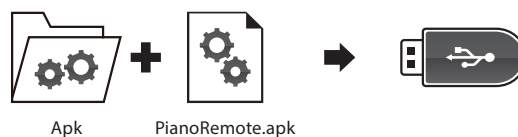
# Software Update (CA/NV LCD touch panel)

## 1. Copy the update files to the USB memory device

Copy the **Apk** folder and **PianoRemote.apk** file from the temporary folder to the root (i.e. top-most) folder of the empty USB memory device.

\* Do not attempt to modify the update files.

\* Do not copy any other data to the USB memory device at this time.



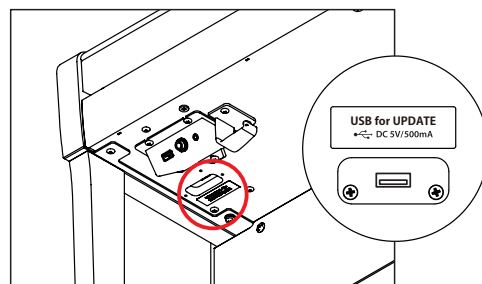
## 2. Connect the USB memory device

While the CA/NV digital/hybrid piano is turned off:

Connect the prepared USB memory device to the **[USB for UPDATE]** port located on the left side of the instrument, underneath the keyboard, and behind the headphone connector block.

\* Be careful not to confuse this port with the **[USB to DEVICE]** port located beside the headphone connectors.

Press the **[POWER]** button to turn on the digital/hybrid piano.



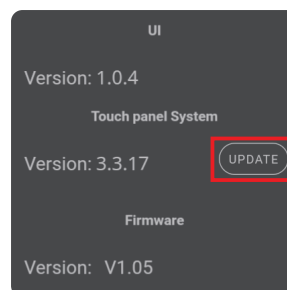
## 3. Start the update

Enter the Version/License screen, as explained on page 1 of this PDF. An **[UPDATE]** button should be shown beside the Touch panel System version number.

Tap the **[UPDATE]** button to start the update.

\* Do not disconnect the USB memory device or turn off the instrument while the update is in progress.

\* If the **[UPDATE]** button does not appear, please return to the previous menu, then re-enter the Version/License screen again. If the **[UPDATE]** button still does not appear, please restart this procedure from step 1.



## 4. Finish the update, disconnect the USB memory device

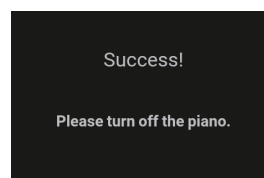
After approximately one minute a "Success!" message should appear, indicating that the update has been successful.

Disconnect the USB memory device, then press and hold the **[POWER]** button to turn the instrument off.

When the instrument is turned on, the updated touchpanel software will be installed and used automatically.

\* During the update installation process, the display will remain black for approximately ten minutes. Please wait for the process to finish. Do not turn the instrument off until the update process is complete.

\* If the update is unsuccessful, please restart this procedure from step 1.



# Software Update (CA/NV LCD touch panel)

## ■ CA/NV LCD touch panel system changelog

---

### **V3.4.8 (February 2023)**

- Fixed: Minor bug fixes and improvements.

### **V3.4.7 (December 2022)**

- Fixed: Bug that would cause the touchpanel app to restart indefinitely after updating from a specific version with certain user settings.

### **V3.4.6 (November 2022)**

- Fixed: Various bugs.

### **V3.4.5 (May 2022)**

- Added: Support for CA901/CA701.

### **V3.4.3 (January 2022)**

- Fixed: Various bugs.

### **V3.4.0-6 (October 2021)**

- Added: Support for adjusting 'User' Virtual Technician parameters. (Touch Curve/Voicing/Tuning/Temperament/Key Volume)

Note: This functionality also requires system software update v2.08 (or newer) to be installed.

\* For more information about the added 'User' Virtual Technician parameters, please refer to the URL below:

[https://www2.kawai.co.jp/emi-web/pianoremove-docs\\_update/en/](https://www2.kawai.co.jp/emi-web/pianoremove-docs_update/en/)

### **V3.3.23 (December 2020)**

- Added: Support for NV10S/NV5S.

### **V3.3.21 (April 2020)**

- Improved: UI update system.

### **V3.3.20 (March 2020)**

- Improved: Update system.

### **V3.3.17 (February 2020)**

- Added: A-B Repeat function added.
- Fixed: Various bugs.

### **V3.3.8 (December 2019)**

- Fixed: Various bugs.

### **V3.3.6 (December 2019)**

- First production version (CA99/CA79).

# Software Update (CA/NV LCD touch panel)

## ■ CA/NV LCD touch panel UI changelog

---

### V1.3.4 (February 2023)

- Improved: Display now shows 'Accessing USB Memory...' message when reading, writing, or deleting data from USB memory.
- Fixed: USB recorder bug related to quickly tapping the [REC] button to re-record immediately after a previous record attempt.

### V1.3.3 (December 2022)

- Fixed: Bug that would cause the touchpanel app to restart indefinitely after updating from a specific version with certain user settings.

### V1.3.1 (November 2022)

- Added: Manual function to the settings menu, which displays a QR code to view the instrument's owner's manual.
- Fixed: Concert Magic issue whereby sound would not play when the tempo of a performed song rapidly increases.
- Improved: Various other bug fixes and improvements.

### V1.3.0 (May 2022)

- Improved: User sounds are now supported in the Piano tab (acoustic piano sounds only).
- Improved: The contents bar now shows "Not saved sound" when a sound has been adjusted but not saved.
- Improved: 'User' Virtual Technician parameter adjustment performance boost.
- Improved: Auto Display Off function now turns off the LCD backlight.
- Improved: Metronome parameter adjustment performance boost.
- Improved: Settings slider adjustment performance boost.
- Improved: Various other bug fixes and improvements.
- Added: Support for CA901/CA701.

### V1.2.1 (January 2022)

- Fixed: Auto Display Off timer bug.
- Fixed: Auto Power Off timer bug.
- Fixed: Auto Display Off tap detection bug.

### V1.2.0 (October 2021)

- Added: Support for adjusting 'User' Virtual Technician parameters.
- Fixed: Bug related to stored sounds not being recalled correctly at startup.
- Improved: Language setting can now be stored and recalled at startup.

### V1.0.6 (December 2020)

- Added: Support for NV10S/NV5S.

### V1.0.6 (April 2020)

- Added: Various improvements and fixes related to the PianoRemote app.

### V1.0.4 (February 2020)

- Added: Overdubbing (Recorder) function.
- Added: User Tone Control setting.
- Added: Bluetooth MIDI display name setting.
- Fixed: Various bugs.

### V1.0.3 (December 2019)

- Fixed: Various bugs.

### V1.0.2 (December 2019)

- First production version (CA99/CA79).