

A U R E S[®] / ANYTIME

HYBRID PIANO

A woman with short dark hair, wearing a dark blue dress and large gold hoop earrings, is seated and playing a black grand piano. Her hands are positioned on the keyboard, and her eyes are closed in a focused expression. The piano's lid is open, revealing the internal mechanism, including the hammers and strings, which are illuminated with a warm, golden light. The overall scene is dimly lit, with the primary light source coming from the piano's interior, creating a dramatic and intimate atmosphere.

ANALOGUE ACTION

AURES[®] AR2

EXPERIENCE THE NEXT REVOLUTION IN ACOUSTIC PIANO RESONANCE

Acoustic instruments with digital soundboard speaker systems for modern convenience.

N DIGITAL WORLD

ANYTIME X ATX4

ENJOY PLAYING THE ACOUSTIC PIANO AT ANYTIME, WITHOUT DISTURBING ANYONE

Grand and upright pianos with digital features that allow silent playing using headphones.

GP TOUCH MUTING SYSTEM

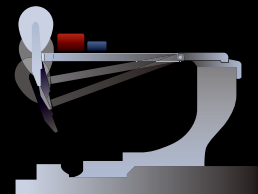
Acoustic piano touch

EXPRESSIVE POWER, REALISTIC TOUCH

All Kawai AURES and AnyTimeX instruments utilise hammer cushioning components that allow the piano's acoustic sound to be muted when desired. The latest AR2 and ATX4 grand piano models incorporate Kawai's new GP Touch Muting System, which accurately halts the action's hammer movement immediately before striking the strings, without the need to make

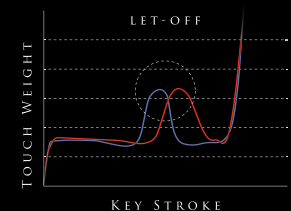
special adjustments to let-off position or timing. This unique design allows pianists to play AR2 and ATX4 grand pianos with exactly the same level of fluency and expression as their standard acoustic counterparts in both normal and muted playing modes, while also enjoying a wide range of convenient and inspiring digital features.

GP TOUCH MUTING SYSTEM



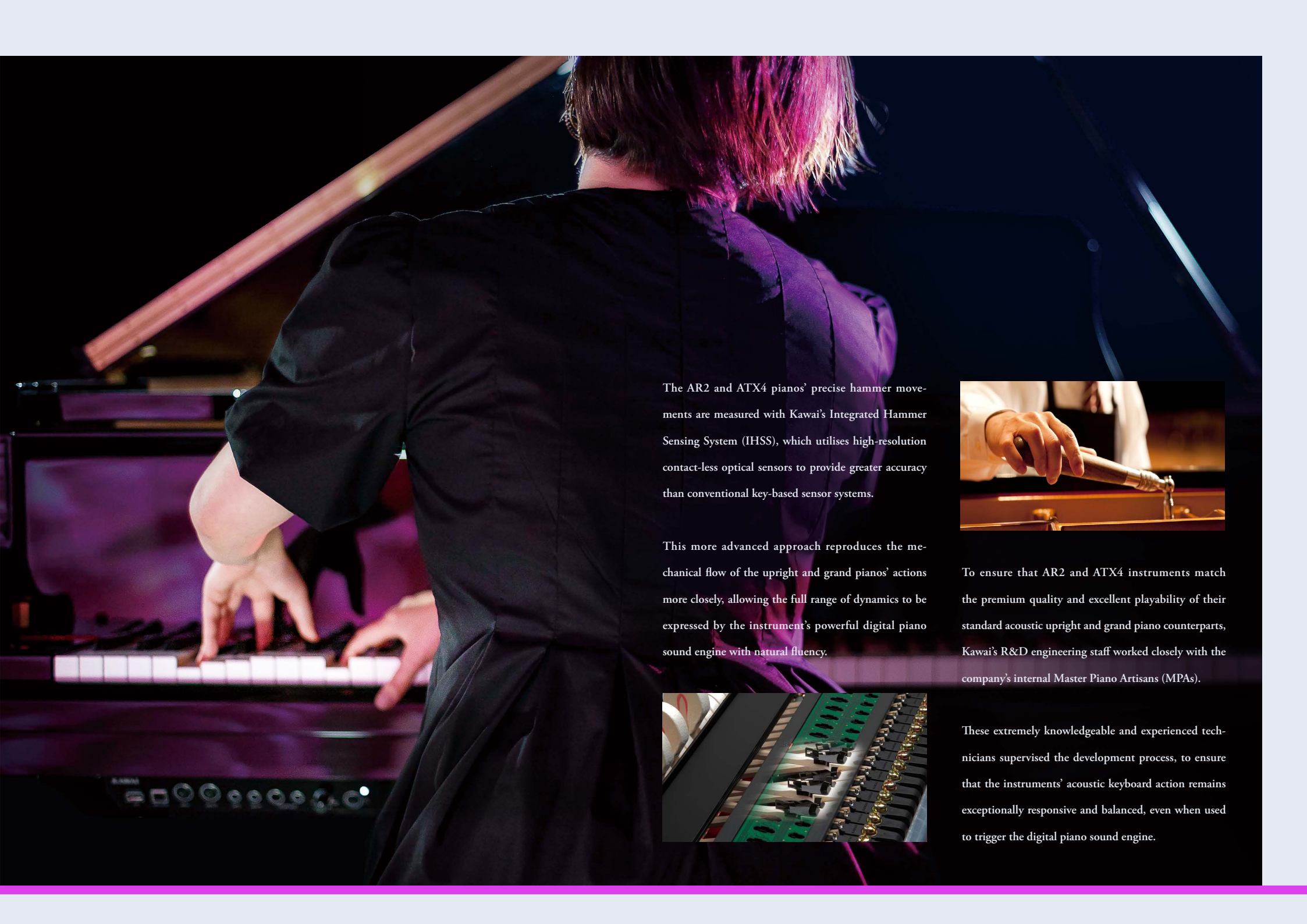
■ GP TOUCH MUTING SYSTEM

The AR2/ATX4's GP Touch Muting System places the stop rail at different points along the keyboard, as close to the hammers as possible, ensuring a firm, precise stop just before striking the strings.



■ CONVENTIONAL STOP SYSTEM

As a result, it is no longer necessary to regulate a shallow let-off point for the action, allowing pianists to enjoy exactly the same grand piano touch feeling in both normal and muted playing modes.



The AR2 and ATX4 pianos' precise hammer movements are measured with Kawai's Integrated Hammer Sensing System (IHSS), which utilises high-resolution contact-less optical sensors to provide greater accuracy than conventional key-based sensor systems.

This more advanced approach reproduces the mechanical flow of the upright and grand pianos' actions more closely, allowing the full range of dynamics to be expressed by the instrument's powerful digital piano sound engine with natural fluency.



To ensure that AR2 and ATX4 instruments match the premium quality and excellent playability of their standard acoustic upright and grand piano counterparts, Kawai's R&D engineering staff worked closely with the company's internal Master Piano Artisans (MPAs).

These extremely knowledgeable and experienced technicians supervised the development process, to ensure that the instruments' acoustic keyboard action remains exceptionally responsive and balanced, even when used to trigger the digital piano sound engine.



Digital piano flexibility

MODERN CONVENIENCE & TECHNOLOGY

AR2 and ATX4 instruments incorporate Kawai's latest digital piano technologies, inherited from the flagship Concert Artist and Novus product lines.

The SK-EX Rendering sound engine uses multi-channel sampling and authentic resonance algorithms to reproduce the beautiful sound of Kawai's SK-EX full concert grand piano. This stunning sound is delivered through the AR2 and ATX4 instrument's premium quality headphone amplifier, allowing pianists to practise in silence, and enjoy the unique touch of an acoustic piano without disturbing friends or family.

In addition to the acoustic muting and digital sound features, AR2 instruments are also equipped with the latest iteration of Kawai's advanced Soundboard Speaker System. This innovative technology utilises four high-performance transducers which are strategically placed onto the upright or grand piano's solid spruce soundboard. These transducers channel the instrument's digitally generated sound through its large wooden soundboard, resulting in a naturally acoustic tone that is more expansive than that produced by traditional cone speakers.



Designed to meet the connectivity needs of modern pianists, AR2 and ATX4 pianos feature standard USB and MIDI jacks for connecting to computers or other instruments, as well as Bluetooth® MIDI and Audio technology that allows wireless communication with supported smart devices.

Once paired to a phone or tablet, AR2 and ATX4 owners can enjoy a wide variety of exciting music-related apps that enhance their studying and playing experiences, or stream high quality audio directly through the instruments' headphones without the need for any cables.

The digital features of AR2 and ATX4 pianos are exclusively controlled via the Kawai PianoRemote app, available for both iOS and Android devices. PianoRemote provides a range of functions, including sound selection and customisation, performance record and playback with integrated metronome, and a built-in piano music library – all accessible from an attractive user interface.



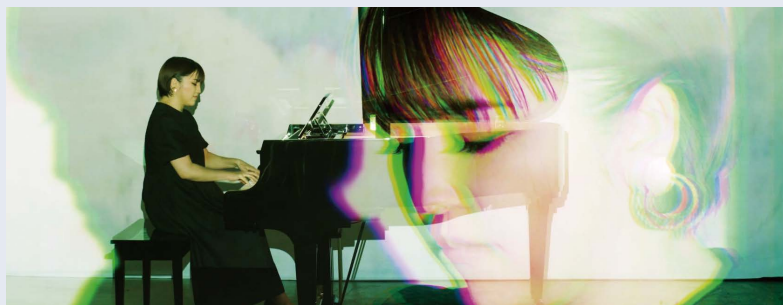
Artist Videos



Kawai Artists Dieter Falk and Luca Sestak dive into the feature set of the AURES GX-2 AR2, exploring its endless possibilities as a standalone grand piano with added digital soul.



Renowned French pianist and tutor Pascal Devoyon experiences AURES and ANYTIME grand pianos, and discusses their various applications in education and teaching environments.



Japanese pianist Maya Kagami features in the official AURES promotion video, which combines stunning visual effects with a modern interpretation of Rachmaninoff's 2nd piano concerto.

Specifications

AURES® AR2

ANYTIME X ATX4

Sensing System	Integrated Hammer Sensing System (IHSS)	
Sound Source	SK-EX Rendering	88-key multi-channel piano sampling, 88-key resonance modelling
	Harmonic Imaging XL	88-key piano sampling
Polyphony	max. 256 notes (depending on selected sound)	
Internal Sounds	SK-EX Rendering	SK-EX Concert Grand (10 rendering characters)
	Harmonic Imaging XL	90 sounds
Effects	SK-EX Rendering	Ambience (10 types)
	Harmonic Imaging XL	Reverb (6 types), Effects (24 types : Chorus x 3, Delay x 3, Tremolo x 3, Auto pan x 2, Phaser x 2, Rotary x 6, Combination x 5)
Metronome	1/4, 2/4, 3/4, 4/4, 5/4, 3/8, 6/8, 7/8, 9/8, 12/8 + 100 drum rhythms 10-400 bpm (20-800 bpm for eighth note rhythms)	
Pedals	Damper (with half-pedal support), Soft, Sostenuto (switchable from Soft for Upright Piano)	
Control / Recorder App	PianoRemote (iOS / Android)	
Connector Jacks	Audio	LINE IN (1/8" STEREO), LINE OUT (1/8" STEREO), Headphones x 2 (1/4", 1/8")
	MIDI / USB	MIDI (IN / OUT), USB to Host, USB for Update
Bluetooth®	Bluetooth® (Ver 4.1 ; GATT compatible) / Bluetooth® Low Energy MIDI Specification compliant / Bluetooth® Audio (Version 3.0, Profile : A2DP, Codecs : SBC, AAC, aptX)	
Sound System	Soundboard Speaker System with 4 transducers (Low-Mid Range x 2, High Range x 2)	-
Power Consumption	58W	20W
Included Accessories	Power cable, AC adapter (PS-242), Headphones SH-9	

Bluetooth® word marks and logos are registered trademarks owned by Bluetooth SIG, Inc. and any use of such marks by Kawai is under license. Other trademarks and trade names are those of their respective owners.

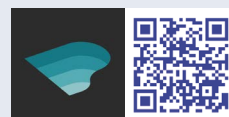
Specifications are subject to change without notice.
Availability of Bluetooth function dependent on market location.

Web



<https://www.kawai-global.com/hybrid>

PianoRemote



(iOS/Android)

AURES Music



(iOS/Android)

PiaBook Player



(iOS/Android)



KAWAI

© 2022 Kawai Musical Instruments Mfg. Co., Ltd. All Rights Reserved
CA024E-CH2212 Version 1 Printed in Japan