

KAWAI



Concert Artist

CA48 · CA58 · CA78 · CA98



THE CONCERT GRAND EXPERIENCE
IN THE COMFORT OF YOUR HOME.

Kawai has been crafting musical instruments for over 90 years, maintaining traditional processes while embracing unique, original ideas. These decades of experience afford our engineers a wealth of knowledge from which to create stunning digital instruments, in a quest to perfect the *art* of the piano.

A digital piano that will transform enthusiastic players into accomplished pianists, and modest rooms into grand concert halls. This is the ambitious philosophy behind Concert Artist digital pianos – premium instruments that capture the essence of playing a magnificent concert grand piano, and inspire musicians to realise their true artistic potential.

To achieve this ambition, every aspect of the latest Concert Artist series has been developed to ensure that these first class instruments provide the most authentic playing experience of any digital piano.

The Concert Artists' *Grand Feel* keyboard actions reinforce Kawai's reputation as an industry leader, utilising real wooden keys with luxurious *Ivory & Ebony Touch* surfaces, and incorporating premium features such as let-off simulation and triple-sensor hammer detection. These class-leading keyboard actions are bolstered by powerful digital audio technologies that faithfully reproduce the exquisite sound of Kawai's magnificent SK-EX concert grand piano.

The latest Concert Artist series also incorporate a variety of useful features to assist learning the piano and recording one's performance. Each instrument supports wireless Bluetooth® connectivity, with the flagship models boasting amplification components developed by premium audio specialists Onkyo.

Yet despite the abundance of powerful technology on the inside, the Concert Artists still delivers a remarkably traditional piano playing experience. This is thanks to the instruments' understated checkblock control panels and handsome cabinet designs, with a selection of distinctive grand piano-like characteristics that celebrate Kawai's rich, classical pedigree.

And there is no finer way to demonstrate this harmonious marriage of groundbreaking modern technology and long-established traditional approaches than Kawai's latest *TwinDrive* soundboard speaker system. This triumph of audio design channels the Concert Artist's high fidelity digital sound onto a genuine spruce soundboard, producing a warm, unmistakably acoustic tone that is more naturally balanced than any other digital piano.

Unrivalled grand touch, breathtaking acoustic tone, distinctive traditional design, and inspirational modern features. Concert Artist from Kawai – the concert grand piano experience in the comfort of your home.

THE TOUCH OF A GRAND PIANO

The keyboard action of an acoustic grand piano is composed of black and white keys, graded hammers, and numerous other components working in harmony when each note is pressed. This beautifully designed mechanism allows gifted pianists to express a wealth of feeling and emotion in their music, as they respond to the tactile nuances transmitted through the keyboard.

Translating the piano action's intricate movements to a digital instrument, while retaining these acoustic-like subtleties is a stunning achievement – one which has drawn upon over 90 years of experience in crafting the world's finest pianos.

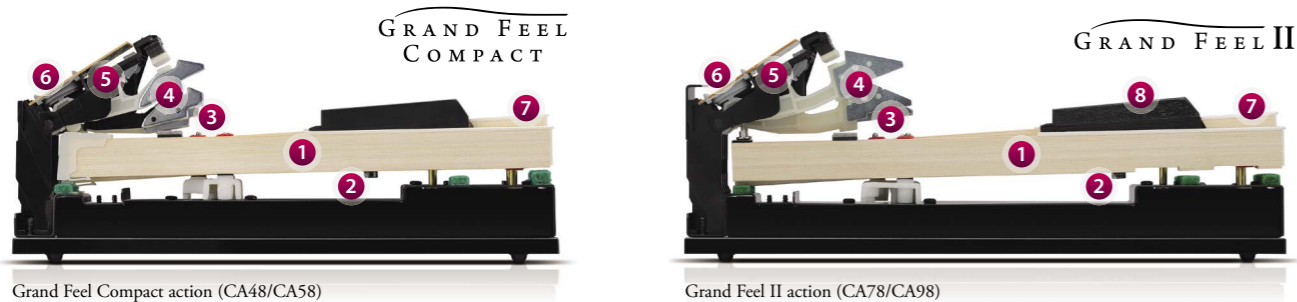
GRAND FEEL WOODEN-KEY KEYBOARD ACTIONS

Embracing many of the long-established principles associated with an acoustic piano, the *Grand Feel* keyboard actions utilised by the latest Concert Artist instruments combine realistic materials, motion, and mechanism to recreate the touch of the finest concert grand pianos.

All eighty-eight black and white keys are crafted entirely from long pieces of wood, rather than a plastic shell with wooden sides. This ensures the weight of each key is distributed evenly throughout the length of the keystick, and guarantees an efficient transfer of movement energy when the note is struck.

Each wooden key pivots smoothly on a metal balance pin, with the ends rising and falling naturally like a seesaw to replicate the familiar motion of an acoustic piano keyboard. These balance pins are offset slightly for black keys in order to provide a more consistent touch weight.

When the front of a key is pressed, the back lifts up, throwing a grade-weighted hammer located above the keyboard to strike a pressure switch. The amount of force applied to this switch is then precisely measured, and the corresponding note played with authentic tonal character and volume.



1 Wooden key 2 Counterweight 3 Balance pins 4 Weighted hammers
5 Let-off mechanism 6 Triple sensor 7 Ivory Touch key surface 8 Ebony Touch key surface

IVORY TOUCH SURFACES

Both *Grand Feel* keyboard actions feature Kawai's authentic *Ivory Touch* white key surface material which gently absorbs fingertip perspiration and oils to assist playing control, and possesses a natural, matte finish that is smooth but not slippery.



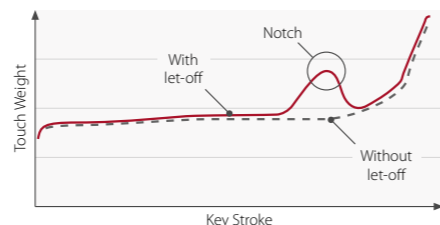
EBONY TOUCH SURFACES

Complementing these premium white keys, the *Grand Feel II* keyboard action found in the CA78 and CA98 models also incorporates *Ebony Touch* black key surfaces that reproduce the finely textured grain and rich lustre of real ebony wood.



LET-OFF SIMULATION

Both *Grand Feel* actions also reproduce the 'let-off' characteristic of acoustic pianos. This subtle 'notch' sensation can be felt when playing the keys of a grand piano very gently, and may be used by experienced pianists to aid pianissimo control.

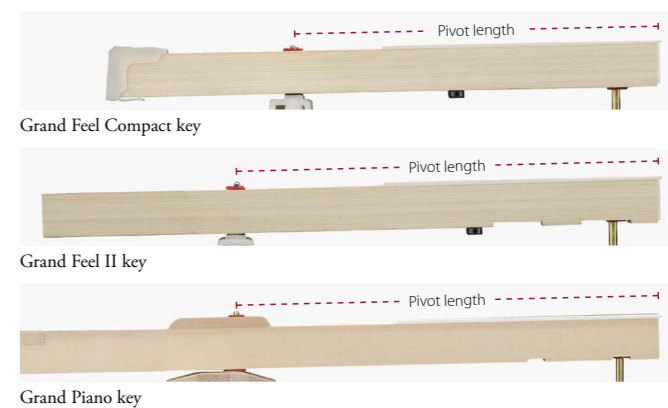


EXTRA-LONG KEY LENGTH, EXTRA-LONG PIVOT LENGTH

In addition to featuring extended, fully wooden keys, *Grand Feel* keyboard actions also boast some of the longest key pivot lengths, with the *Grand Feel II* action pivot length matching that of a Kawai grand piano.

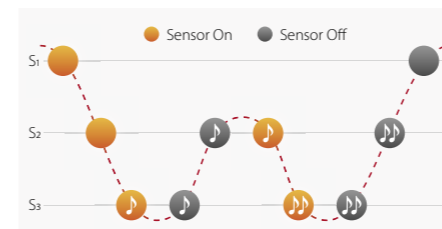
Most digital piano keyboard actions are characterised by a short key pivot length, which can hamper musical expression when playing passages with fingers positioned towards the back of the keyboard.

However the extended key pivot lengths of Kawai's *Grand Feel* keyboard actions provide a more evenly balanced touch weight from the front to the rear of each key, allowing greater fluency and expressive control, while also minimising the need to readjust one's technique when playing an acoustic grand piano.



3-SENSOR KEY DETECTION

Complementing the grand piano-class key pivot length, both *Grand Feel* actions also feature Kawai's latest triple-sensor detection system for enhanced playing realism. This third sensor improves responsiveness when playing the same key repeatedly, and allows the sound of a single note to be gradually 'layered' without the previous tones being lost.



In addition, the Concert Artists' advanced sound hardware also permits the speed at which keys are lifted to influence the release character of piano sounds, providing a greater range of expressive detail between staccato and legato playing.

KEY COUNTERWEIGHTS

In addition to grade-weighted hammers, the *Grand Feel* keyboard actions also feature counterweights attached beneath the keys. As with an acoustic piano, these finely balanced weights help to lighten the touch of the keyboard during pianissimo passages, while adding a feel of greater substance when playing with force.

The *Grand Feel Compact* action applies these key weights to the bass region, while the flagship *Grand Feel II* action incorporates 88-key graded counterweights across the full length of the keyboard.



What is the significance of using real wooden keys?

Wood has been the preferred material for acoustic piano keys for centuries, and was first introduced in Kawai digital pianos over 30 years ago. Yet despite the countless improvements to acoustic and digital piano action technologies in recent years, engineers still recognise that wood remains the best material for the keyboard.

Unlike plastics and most other man-made substances, wood possesses unique characteristics that allow it to absorb a degree of movement energy and flex slightly when compressed. This means that when a wooden key is pressed, it reaches the cushioned felt keyboard with a natural, reassuring stop, rather than a jarring, noisy halt.

THE SOUND OF A GRAND PIANO

The Shigeru Kawai SK-EX concert grand piano was conceived as the next step in evolving the art of the piano. Earning a reputation as the 'premier piano of Japan,' it graces the stages of concert halls and musical institutions around the globe, receiving universal acclaim for its exceptional clarity and dynamic range.

The SK-EX has frequently been selected by professional pianists at such prestigious events as the Chopin, Tchaikovsky, and Rubinstein international piano competitions. With its magnificent tone and wonderfully responsive touch, the SK-EX can best be described with one word – incomparable.



1  88

88-KEY PIANO SAMPLING

The rich, expressive sound of the Shigeru Kawai SK-EX is at the heart of the Concert Artist digital pianos, with all eighty-eight keys of this world-class instrument painstakingly recorded, meticulously analysed, and accurately reproduced as high-fidelity digital waveforms.

Recording each key individually in this way – as opposed to stretching the same tone over several different notes – preserves the grand piano's unique harmonic character, and guarantees that the sound heard when playing any one of the Concert Artist's wooden keys is a faithful representation of the original acoustic source.

HARMONIC IMAGING TECHNOLOGY

When playing a fine piano, the amount of pressure applied to the keyboard affects not only the volume of the sound produced, but also the unique tonal character of each note. Therefore, in order to construct a realistic acoustic portrait of the Shigeru Kawai SK-EX concert grand, not only is each key recorded individually, but also at various levels of expression ranging from pianissimo to fortissimo.

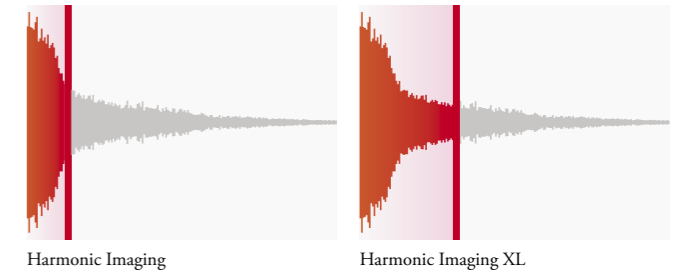
All four Concert Artist instruments offer a highly detailed acoustic portrait, with *Harmonic Imaging* technology ensuring smooth tonal transitions across the keyboard and throughout the dynamic range.



EXTRA-LONG SAMPLING (HI-XL)

With expanded piano sound memory, the latest Concert Artist instruments* boast some of the largest sample sizes of any Kawai digital piano. The 'eXtra Long' standard of Kawai's *Harmonic Imaging* technology takes full advantage of this additional memory capacity by extending the important attack portion of the piano sound. This allows the natural detail and resonance characteristics of each note to be articulated more clearly, and improves the instrument's organic tonal quality overall.

* excluding CA48



ACOUSTIC PIANO VARIETY

In addition to the core Shigeru Kawai SK-EX sound, the Concert Artist instruments also include digital reproductions of the original EX concert piano and popular SK-5* studio grand, allowing musicians to enjoy the contrasting properties of each. A traditional Kawai upright piano sound is also provided for players seeking the most authentic practise experience.



* CA78/CA98 only

POWERFUL VIRTUAL TECHNICIAN

The Concert Artist's powerful *Virtual Technician* function allows discerning musicians to shape various aspects of each piano's character to suit their preferences.

Players can perform touch and voicing adjustments, regulate hammer and key release noises, and fine-tune string, lid, and damper resonances. It is even possible to adjust the precise tuning and volume of individual notes – all in real-time. A dedicated *Virtual Technician* iPad app* is also available, providing an enjoyable way to learn about and adjust each characteristic.



* CA48/CA58 only



Dedicated 'Pianist' mode: SK-EX Rendering sound engine*

In order to faithfully reproduce the stunning sound of a Shigeru Kawai concert grand piano digitally, Kawai has developed *SK-EX Rendering*. This brand new piano-only sound engine focusses all of the Concert Artist's DSP power, combining multi-channel, 88-key sampling with the latest resonance modelling technology to deliver pure acoustic piano authenticity.

SK-EX Rendering is enabled by selecting the dedicated Pianist Mode, which features ten differently prepared piano characters ranging from Classic and Romantic, to Pop, Jazz, and even Boogie.

* CA78/CA98 only

MULTI-CHANNEL SAMPLING, RESONANCE MODELLING

While digital pianos typically employ single-point stereo sampling, the *SK-EX Rendering* engine's multi-channel sampling captures the sound from different points of the Shigeru Kawai concert grand.

This modern technique not only allows a broader range of tonal characteristics to be recorded and reproduced, but also improves the connection felt between the keyboard and piano sound, resulting in a more lively and authentic response to changes in dynamics.

This naturally expressive Shigeru Kawai sound is further enriched by newly developed resonance algorithms, which physically model the complex tonal interactions produced by the strings, dampers, and various other parts of an acoustic piano.

SK-EX Rendering generates resonances for the damper pedal and all 88 keys progressively (i.e. in gradual amounts), allowing the Concert Artist to behave – and therefore be controlled – more like an acoustic piano.



THE DELIVERY OF AN ACOUSTIC PIANO

The distinctive sound of an acoustic piano is produced by felt hammers striking metal strings. As these strings vibrate, they transfer energy through the bridge onto the instrument's wooden soundboard, resulting in a rich, powerful sound.

In order to reproduce these characteristics, and transform the digitally generated SK-EX sound into an authentic acoustic piano tone, the Concert Artist series features high quality amplifier components and multi-speaker delivery systems optimised for each model. Raising the bar further, the leading CA78 and CA98 instruments also incorporate premium technologies developed in collaboration with Onkyo, to achieve a new standard in digital piano audio fidelity.



Premium audio technologies, Powered by Onkyo*

Developed in collaboration with Onkyo, one of Japan's leading premium audio equipment manufacturers, the high-specification CA78 and CA98 are among the first Kawai musical instruments to utilise specialist components designed especially for high-end audio reproduction.

With cutting-edge technologies such as 1-bit processing, dual DAC signal conversion, and Onkyo's DIDRC filtering, these instruments' optimised power amplifiers reproduce the Shigeru Kawai grand piano sound with stunning clarity, richness, and power, while the high-performance Discrete SpectraModule™ headphone amplifier ensures the finest quality listening experience, even when playing in privacy.

* All features CA78/CA98 only

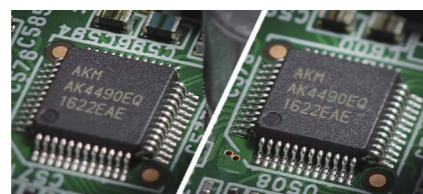
1-BIT DSD PROCESSING

This process vastly increases the piano's sound resolution to a rate 256 times that of a CD. This results in a more 'analogue' tonal quality that is less fatiguing than standard digital audio.



PREMIUM DUAL DACS

These two components decode the left and right channels of the piano sound separately. This helps to ensure the most precise digital to analogue conversion of the SK-EX source.



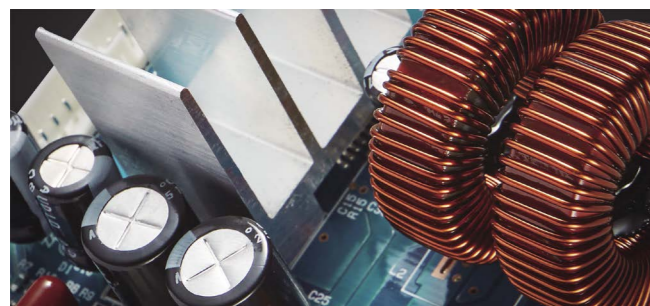
DIDRC FILTER

Onkyo's unique filtering technology eliminates digital-specific noise that can cause distortion. This helps to preserve the Shigeru Kawai grand piano's special harmonic characteristics.



PREMIUM POWER AMPLIFIERS

These Onkyo developed amplifiers utilise high specification components for improved richness and presence, with a vast dynamic range that is free of distortion. The individually-wired amplifier modules deliver sound energy to the instruments' speaker systems with maximum efficiency.



DISCRETE SPECTRAMODULE™

A unique headphone amplifier developed by Onkyo using the latest audio technologies. This class-leading amplifier features a 500 V/μs slew-rate, ensuring ultra-fast response to rapid changes in sound level, fully reproducing the SK-EX concert grand piano's broad dynamic characteristics.



CLASS-LEADING SPEAKER SYSTEMS

The latest Concert Artist instruments feature high fidelity speaker systems that have been specially designed and optimised for each model to deliver deep bass and crisp treble frequencies.

The impressive CA48 features a 4-speaker output system, with lower and mid frequencies delivered through the underside of the instrument, and high frequencies projected outward via front-facing drivers. The more powerful CA58 4-speaker configuration utilises larger, oval-shaped top-mounted speakers that provide additional depth and clarity.



CA48: Front-facing speakers



CA58: Top-facing speakers

AUTHENTIC SOUND PROJECTION

The leading CA78 and CA98 models both feature advanced 6-speaker output systems, with front and top-facing drivers delivering an expansive tone that closely mirrors the sound projection of an acoustic grand piano.



As the flagship model of the Concert Artist series, the CA98 utilises premium Onkyo speakers, selected for their neutral frequency response and ultra-low distortion characteristics, ensuring the most accurate reproduction of the original Shigeru Kawai SK-EX concert grand possible.

TWINDRIVE SOUNDBOARD SPEAKER SYSTEM

Complementing the premium Onkyo drivers, the CA98 also incorporates the latest version of Kawai's highly-regarded soundboard speaker system. This unique audio technology channels sound energy onto a large wooden soundboard, resulting in a remarkably authentic playing experience that immerses the performer, and faithfully reproduces the tonal ambience of an acoustic piano.

The new *TwinDrive* system represents the third generation of Kawai's soundboard technology, and features an improved primary transducer developed by Onkyo to deliver more power and volume. In addition, a brand new secondary transducer – also developed by Onkyo and mounted towards the treble end of the instrument – helps to further expand the soundboard's tonal range, allowing mid-low and even mid-high audio frequencies to also benefit from the warming, acoustic properties of wood.



THE VARIETY OF A DIGITAL PIANO

Complementing the instruments' authentic, fully wooden-key keyboard actions, stunning grand piano sounds, and premium audio delivery technologies, the Concert Artist series also offer a strong selection of digital features that further enhance one's musical enjoyment.

Full Bluetooth® connectivity and USB audio record/playback* allows musicians to extend the functionality of their piano, or play-along with their favourite artists, while the convenient metronome and integrated lesson functions, featuring classical etudes and Alfred course books, ensure that regular practise is both productive and engaging for aspiring pianists.



RICH SOUND SELECTION

Supplementing their beautiful acoustic piano voices, the Concert Artist instruments also feature a selection of additional sounds, ranging from electric pianos and drawbar or church organs, to strings, human choirs, and synths, inviting musicians to add greater variety to their performance.



Furthermore, the Dual playing mode also allows two different sounds, such as grand piano and strings, to be layered together, while the Split* and Four Hands modes divide the keyboard into two independent sections. The volume balances and other settings for each playing mode can be quickly and easily adjusted using the piano's cheekblock control panel.*

LESSON & FINGER EXERCISES

The Concert Artists' convenient lesson function allows aspiring pianists to learn piano with classical Bach, Beyer, Burgmüller, Chopin, and Czerny etudes, or a collection of songs from the popular *Alfred* Basic, Adult, and Premier course books.*

With a strong emphasis on acoustic piano realism, these instruments also feature traditional finger exercises, scales, and warm-up drills, and even include a companion book of printed scores to further aid one's practise.*



GRAND FEEL PEDAL SYSTEM

Reinforcing the Concert Artists' reputation as the most realistic digital pianos is Kawai's *Grand Feel Pedal System*. This unique development accurately replicates the position and individual weighting of the damper, soft, and sostenuto pedals of the Shigeru Kawai SK-EX concert grand piano to further enhance the Concert Artists' acoustic piano authenticity.

Moreover, it is also possible to adjust the half-pedal sensitivity of the damper pedal, and effectiveness of the soft pedal using specially engineered *Virtual Technician* parameters*, allowing musicians to personalise the instrument's response to match their preferred pedalling technique.



SUPERIOR HEADPHONE EXPERIENCE

The Concert Artists' *Spatial Headphone Sound* (SHS) technology enhances the depth and realism of the instruments' piano sounds when using headphones or earphones, while also helping to reduce auditory fatigue when listening for extended periods of time.



All four instruments feature 1/8" mini-stereo and 1/4" standard phones sockets, allowing both types of headphones to be connected without the need for additional converter plugs. Moreover, the two sockets can be connected simultaneously, allowing a parent to listen to their child's piano practise without disturbing other members of the family.

FLEXIBLE USB CONNECTIVITY

The Concert Artist pianos are equipped with modern USB connectors that allow the instruments to be connected directly to a computer for MIDI use, or to load and save data to USB memory devices.*



This latter *USB to Device* functionality allows memorable recorder songs stored in internal memory to be safely preserved on inexpensive USB flash drives, or for standard MIDI files (SMF) downloaded from the internet to be listened to using the instruments' exquisite *Harmonic Imaging XL* sounds without additional hardware.

USEFUL CONNECTIVITY OPTIONS

Accompanying the regular *USB to Host* and *USB to Device* connectors, the Concert Artist instruments also feature standard 5-pin MIDI and Line-level audio jacks, with a convenient knob for adjust input levels.* These useful connectivity options allow the instrument to be enjoyed in larger settings such as churches or school halls, and provide greater flexibility when using computers and other audio devices.



MP3 AUDIO PLAYBACK & RECORD

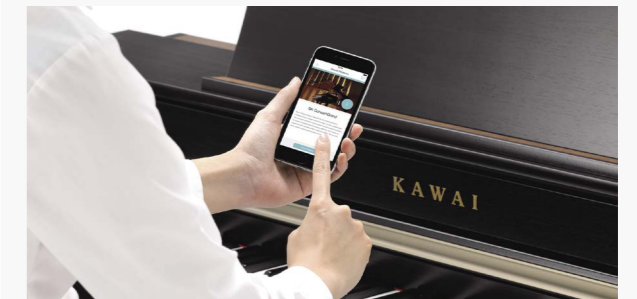
USB memory devices can also be used to play back MP3 or WAV audio files*, allowing musicians to learn the chords or melody for a new piece, or to simply play along with their favourite songs.

It is even possible to record entire performances (including external Line-In audio) directly as MP3 or WAV audio files for emailing to family and friends, or casual listening away from the piano.

BLUETOOTH® TECHNOLOGY

In addition to standard USB and MIDI jacks for exchanging data with computers and other instruments, the Concert Artist series also feature integrated Bluetooth® technologies that allow the pianos to communicate with supported smart devices wirelessly.

Bluetooth MIDI provides the same functionality as regular MIDI or USB-MIDI, with the added convenience of wireless connectivity. Once paired with a phone, tablet, or laptop, Concert Artist owners can enjoy a wide variety of exciting education, performance, and scoring apps that enhance their learning and playing experience.



The CA78 and CA98 models expand upon this wireless functionality by also offering built-in Bluetooth Audio. This feature allows the audio from a mobile device (such as a song or video clip) to be conveniently played through the instruments' premium amplifier and speaker systems without the need to connect additional cables.

* CA48 features may vary compared to other models.

APPRECIATING ACOUSTIC PIANO DESIGN

Standing proudly amongst other items of fine furniture, a piano is often considered the centrepiece of any room it occupies. With elegant cabinetry, striking accents, and a natural wooden finish, the exterior appearance of a piano contributes more to the overall aesthetic of playing and listening to music than arguably any other instrument.

This shared belief inspires Kawai's digital and acoustic piano designers to work together, developing original ideas that improve functionality, without detracting from an instrument's traditional character.



GRAND FIRST IMPRESSIONS

Sitting down at a Concert Artist, the first thing that strikes the player is the instrument's flat fascia and tall upper board, giving the impression of a grand piano and immediately elevating the musical aspirations of the performer. The distinctive KAWAI badge – representing three generations of proud family leadership, and over 90 years of piano excellence – adorns the Concert Artist's fallboard, with its warm, metallic glow mirroring the movements of the keyboard below.



BROAD, ADJUSTABLE MUSIC REST

The Concert Artists' broad music rest has been designed to accommodate the most ambitious musical works, with smoothly rounded edges and simulated leather lining the base.* As with a grand piano, the viewing angle of each instrument's music rest can be adjusted to suit the performer's playing position, or laid flat for convenience when notating scores or sketching musical ideas. The premium CA78 and CA98 models allow the music rest to be set to one of six different positions, including a special 'composer desk' angle for optimum productivity and comfort.



* CA78/CA98 only

MODERN-CLASSIC CABINET DESIGN

The cabinet design for each Concert Artist model incorporates sharp, stylish lines, balanced by elegantly tapered support legs. This combination of both traditional and modern design elements reflects Kawai's rich acoustic piano heritage, while underscoring the state-of-the-art digital technology inside each instrument.



With a width of just over 135 cm, the CA48's compact cabinet is ideal for smaller rooms where space may be limited. Its tapered legs have a minimalist appearance, while the larger Concert Artist models feature wooden toeblocks that contribute to the instruments' classical presence.



CA48: Minimalist toeblock

CA58/CA78/CA98: Wooden toeblock

CHECKBLOCK CONTROL PANELS

Subtly concealing their impressive digital features, the main control panel for each Concert Artist model is discreetly embedded within the pianos' left cheekblock. This helps to preserve the instruments' traditional grand piano-like appearance, and allows performers to enjoy the simple pleasure of playing music without the constant visual distraction of flashing lights and rows of buttons directly above the keyboard.

CA48: Compact button panel

The CA48's compact control panel features six buttons that are used for changing sounds and selecting functions. A 3-digit numeric LED display indicates metronome tempo and other settings values, which can be accessed by combining button and key presses.



CA58: Standard button panel

The CA58's standard cheekblock control panel features a much larger number of buttons, used for selecting sound categories, controlling functions, and changing settings. A large pixel LCD display allows every feature to be accessed directly from the panel.



CA78/CA98: Touchscreen display panel

The premium CA78 and CA98 models incorporate a full-colour 5" touchscreen within the cheekblock, allowing sounds and settings to be selected from an attractive user interface simply by tapping or swiping the display with a finger.





CA48

AN OUTSTANDING INTRODUCTION TO CONCERT ARTIST QUALITY.



Premium Rosewood



Premium Satin Black



Premium Satin White

CA48 OVERVIEW

Featuring the brand new *Grand Feel Compact* wooden-key keyboard action, beautiful SK-EX and EX concert grand piano sounds, and modern Bluetooth® connectivity, the piano-focussed CA48 offers many of the strengths of the premium Concert Artist models within a more compact and affordable package.

- Class-leading Grand Feel Compact wooden-key keyboard action
- Ivory Touch key surfaces, triple sensor, let-off, counterweights
- Progressive Harmonic Imaging sound with 88-key sampling
- Shigeru Kawai SK-EX & Kawai EX concert grand piano sounds
- Integrated Bluetooth® MIDI wireless technology
- Built-in classical etudes and Alfred lesson books
- Spatial Headphone Sound for enhanced depth and realism
- Attractive, compact cabinet with cheekblock control panel

CA58

CONCERT ARTIST PERFORMANCE AT AN AFFORDABLE PRICE.



Premium Rosewood



Premium Satin Black



Premium Satin White

CA58 OVERVIEW

Combining the latest *Grand Feel Compact* wooden-key keyboard action and stunning SK-EX and EX concert grand piano sounds, with powerful 4 speaker output, convenient USB audio features, Bluetooth® connectivity, and a strong selection of sounds, the CA58 delivers best-in-class touch, tone, and features at an outstanding price.

- Class-leading Grand Feel Compact wooden-key keyboard action
- Ivory Touch key surfaces, triple sensor, let-off, counterweights
- Harmonic Imaging XL sound engine with 88-key sampling
- Shigeru Kawai SK-EX & Kawai EX concert grand piano sounds
- Powerful four speaker, 100 W output system
- Integrated Bluetooth® MIDI wireless technology
- MP3/WAV playback, record, and overdub to USB memory
- Built-in classical etudes and Alfred lesson books
- Spatial Headphone Sound for enhanced depth and realism
- Premium quality cabinet design with cheekblock control panel



CA78

CONCERT GRAND AUTHENTICITY
FOR AMBITIOUS PIANISTS.



Premium Rosewood



Premium Satin Black



Premium Satin White

CA78 OVERVIEW

Combining Kawai's industry-leading *Grand Feel II* wooden-key keyboard action, stunning *SK-EX Rendering* piano sound engine with multi-channel sampling and resonance modelling, premium audio processing and amplification technologies powered by Onkyo, and a powerful 6-speaker output system, the CA78 delivers grand piano playing authenticity at a competitive price.

- Industry-leading Grand Feel II wooden-key keyboard action
- Ebony & Ivory Touch key surfaces, 3-sensor, let-off, counterweights
- SK-EX Rendering piano sound engine with multi-channel sampling
- Premium audio processing and amplification powered by Onkyo
- Powerful, high-fidelity 6-speaker output system
- Integrated Bluetooth® MIDI and Audio wireless technology
- Modern 5" LCD touchscreen display embedded within cheekblock
- MP3/WAV playback, record, and overdub to USB memory
- Spatial Headphone Sound for enhanced depth and realism
- Premium quality cabinet design with 6-position music rest

CA98

THE CONCERT GRAND EXPERIENCE
IN THE COMFORT OF YOUR HOME.



Premium Rosewood



Premium Satin Black



Premium Satin White

CA98 OVERVIEW

Featuring the industry's leading *Grand Feel II* wooden-key keyboard action, latest *SK-EX Rendering* piano sound engine with multi-channel sampling and resonance modelling, premium amplification and speaker technologies powered by Onkyo, and Kawai's unique *Twin Drive* soundboard speaker system, the CA98 delivers one of the finest grand piano experiences available in a digital instrument.

- Industry-leading Grand Feel II wooden-key keyboard action
- Ebony & Ivory Touch key surfaces, 3-sensor, let-off, counterweights
- SK-EX Rendering piano sound engine with multi-channel sampling
- Premium audio processing and amplification powered by Onkyo
- Premium Onkyo speaker system featuring TwinDrive soundboard
- Integrated Bluetooth® MIDI and Audio wireless technology
- Modern 5" LCD touchscreen display embedded within cheekblock
- MP3/WAV playback, record, and overdub to USB memory
- Spatial Headphone Sound for enhanced depth and realism
- Premium quality single-piece cabinet with 6-position music rest

TECHNICAL SPECIFICATIONS

		CA48	CA58	CA78	CA98
Keyboard	Action Type	Grand Feel Compact	Grand Feel Compact	Grand Feel II	Grand Feel II
	Mechanism	Seesaw type	Seesaw type	Seesaw type	Seesaw type
	Key Length	Long	Long	Extra Long	Extra Long
	Key Material	88 fully wooden keys	88 fully wooden keys	88 fully wooden keys	88 fully wooden keys
	Key Surfaces	Ivory Touch	Ivory Touch	Ivory Touch + Ebony Touch	Ivory Touch + Ebony Touch
	Counterweights	Bass region only	Bass region only	All 88 keys, graded	All 88 keys, graded
	Let-off Simulation	Yes	Yes	Yes	Yes
Sound		–	–	Pianist mode	Sound mode
	Sound Engine	Progressive Harmonic Imaging (PHI)	Harmonic Imaging XL (HI-XL)	SK-EX Rendering	Harmonic Imaging XL (HI-XL)
	Grand Piano Source	SK-EX, EX	SK-EX, EX	SK-EX	SK-EX, EX, SK-5
	No. of Sounds	19 sounds	42 sounds	10 rendering characters	66 sounds
	Polyphony	max. 192 notes (depending on selected sound)	max. 256 notes (depending on selected sound)	max. 256 notes (depending on selected sound)	
	88-key Sampling	Yes	Yes	Yes	Yes
	Multi-channel Sampling	–	–	Yes	–
	Resonance System	Damper Resonance, String Resonance	Acoustic Rendering	SK-EX Rendering	Acoustic Rendering
	Reverb	6 types	6 types	10 types (Ambience)	6 types
	Effects	Preset	24 types	–	24 types
	Virtual Technician	Smart Mode: 10 types Advanced Mode: 17 parameters (requires iPad app)	Smart Mode: 10 types Advanced Mode: 19 parameters	Smart Mode: – Advanced Mode: 9 parameters	Smart Mode: 10 types Advanced Mode: 19 parameters
	Delivery	1-bit Processing	–	–	Yes
Dual DAC		–	–	Yes	Yes
DIDRC Filter		–	–	Yes	Yes
Discrete SpectraModule		–	–	Yes	Yes
Premium Power Amp		–	–	Yes	Yes
Output Power		40 W (20 W x 2)	100 W (50 W x 2)	100 W (50 W x 2)	
Speaker System		13 cm x 2 (full range), 5 cm x 2 (front speakers)	13 cm x 2 (woofers), (8 x 12) cm x 2 (top speakers)	13 cm x 2 (woofers), (8 x 12) cm x 2 (top speakers), 5 cm x 2 (tweeters)	
Recorder		–	–	Pianist mode	Sound mode
	Internal Recorder	3 song recorder	10 song, 2 track recorder	3 song recorder	10 song, 2 track recorder
	USB Recorder	–	MP3, WAV, Save SMF/KSO Line In Record, Overdubbing	MP3, WAV Line In Record, Overdubbing	MP3, WAV, Save SMF/KSO Line In Record, Overdubbing
	USB Playback	–	MP3, WAV, SMF, KSO	MP3, WAV, SMF, KSO	
	Metronome	7 time signatures	10 time signatures, 100 drum rhythms	10 time signatures, 100 drum rhythms	
Internal Songs	Demo Songs	19 songs	32 songs	37 songs	39 songs
	Piano Music	–	29 or 42 songs ¹	29 or 42 songs ¹	29 or 42 songs ¹
	Concert Magic	40 songs	176 songs	176 songs	176 songs
	Lesson Function	5 lesson books ²	12 lesson books ²	13 lesson books ²	13 lesson books ²
Features	Keyboard Modes	Dual, 4Hands (Volume/Balance adjustable)	Dual, Split, 4Hands (Volume/Balance adjustable)	Dual, Split, 4Hands (Volume/Balance adjustable)	Dual, Split, 4Hands (Volume/Balance adjustable)
	Display	LED display (3 digit, 7 segment)	Monochrome LCD (128 x 64 pixels)	5" colour LCD touchscreen (480 x 800 pixels)	5" colour LCD touchscreen (480 x 800 pixels)
	Memories	–	16 Registration memories (8 x 2)	16 Favorite memories (4 x 4 pages)	16 Favorite memories (4 x 4 pages)
	Spatial Headphone Sound	Normal, Forward, Wide, Off	Normal, Forward, Wide, Off	Normal, Forward, Wide, Off	Normal, Forward, Wide, Off
	Pedals	Damper, Soft, Sostenuto – Grand Feel Pedal System	Damper, Soft, Sostenuto – Grand Feel Pedal System	Damper, Soft, Sostenuto – Grand Feel Pedal System	
	App Support	Virtual Technician (iPad), Sound Museum (iOS)	Virtual Technician (iPad), Sound Museum (iOS)	–	
	Other Features	Transpose/Tuning, Sound Preview, Vocal Assist, Brilliance, Factory Reset, MIDI settings	Transpose/Tuning, Tone Control (incl. User), Speaker Volume, Line In Level, Phones Type, Phones Volume, Factory Reset, MIDI settings	Transpose/Tuning (Sound mode only), Tone Control (incl. User), Speaker Volume, Line In Level, Phones Type, Phones Volume, LCD Contrast, Factory Reset, MIDI settings, Bluetooth settings	Transpose/Tuning (Sound mode only), Tone Control (incl. User), Wall EQ, Speaker Volume, Line In Level, Phones Type, Phones Volume, LCD Contrast, Factory Reset, MIDI settings, Bluetooth settings
Connectivity	Headphones	1 x 1/4", 1 x 1/8" STEREO	1 x 1/4", 1 x 1/8" STEREO	1 x 1/4", 1 x 1/8" STEREO	1 x 1/4", 1 x 1/8" STEREO
	Audio	–	LINE IN (1/8" STEREO), LINE IN Level, LINE OUT (1/4" L/MONO, R), LINE OUT Level	LINE IN (1/8" STEREO), LINE IN Level, LINE OUT (1/4" L/MONO, R)	LINE IN (1/8" STEREO), LINE IN Level, LINE OUT (1/4" L/MONO, R)
	MIDI/USB	MIDI (IN/OUT), USB to Host	MIDI (IN/OUT), USB to Host, USB to Device	MIDI (IN/OUT), USB to Host, USB to Device	MIDI (IN/OUT), USB to Host, USB to Device
	Bluetooth*	Bluetooth MIDI	Bluetooth MIDI	Bluetooth MIDI, Bluetooth Audio	Bluetooth MIDI, Bluetooth Audio
	Power	DC IN (11 W consumption)	AC IN (45 W consumption)	AC IN (50 W consumption)	
Design	Music Rest	Wide type, adjustable angle (3 positions)	Wide type, adjustable angle (3 positions)	Wide type, adjustable angle (6 positions)	Wide type, adjustable angle (6 positions)
	Dimensions (Nor including music rack)	136 (W) x 46.5 (D) x 88.5 (H) cm 53 1/2" (W) x 18 1/3" (D) x 35" (H)	145.5 (W) x 45.5 (D) x 92.5 (H) cm 57 1/3" (W) x 18" (D) x 36 1/2" (H)	145.5 (W) x 45.5 (D) x 92.5 (H) cm 57 1/3" (W) x 18" (D) x 36 1/2" (H)	145.5 (W) x 46.5 (D) x 94.0 (H) cm 57 1/3" (W) x 18 1/3" (D) x 37" (H)
	Weight	57.0 kg / 126 lbs.	73.0 kg / 161 lbs.	75.0 kg / 163 1/3 lbs.	

¹ Depending on market location.

² Lesson Function score books sold separately.

Specifications are subject to change without notice.
Availability of Bluetooth function dependent on market location.

KAWAI

THE FUTURE OF THE PIANO



Bluetooth® word marks and logos are registered trademarks owned by Bluetooth SIG, Inc. and any use of such marks by Kawai is under license. Other trademarks and trade names are those of their respective owners.